

BRIDGESTONE
Your Journey, Our Passion

BATTLAX RACING STREET **RS11**



BRIDGESTONE
Your Journey, Our Passion

“The New Battlax Racing Street RS11: unbelievable premium performance”

The Battlax Racing Street RS11 is Bridgestone's latest tyre going from track to road: a premium product that will enhance your feeling and feedback on the bike.

The technical upgrades on the RS11 are directly derived from Bridgestone's developments in the highest racing categories.

The RS11 is the first road oriented tyre that has adopted the new V-MS-construction which is currently used in Bridgestone's highest performing race tyres. The pattern design finds many similarities with the dry racing grooved tyre R11. The grooves are in line with the needs and of track use, and include the necessary adaptations for a safe usage on road.

The RS11 compound configuration is a 3LC on the front as well as on the rear. On the rear it has an additional cap and base compound to match required tread stiffness and stability. The total grip improvement is huge.

The Battlax Racing Street RS11 will make your decision to ride today easy... Let's go!



BATTLAX *RACING* **STREET RS11**



Bridgestone's Battlax Racing Street RS11, premium performance for highly demanding rides

BATTLEAX RACING STREET RS11

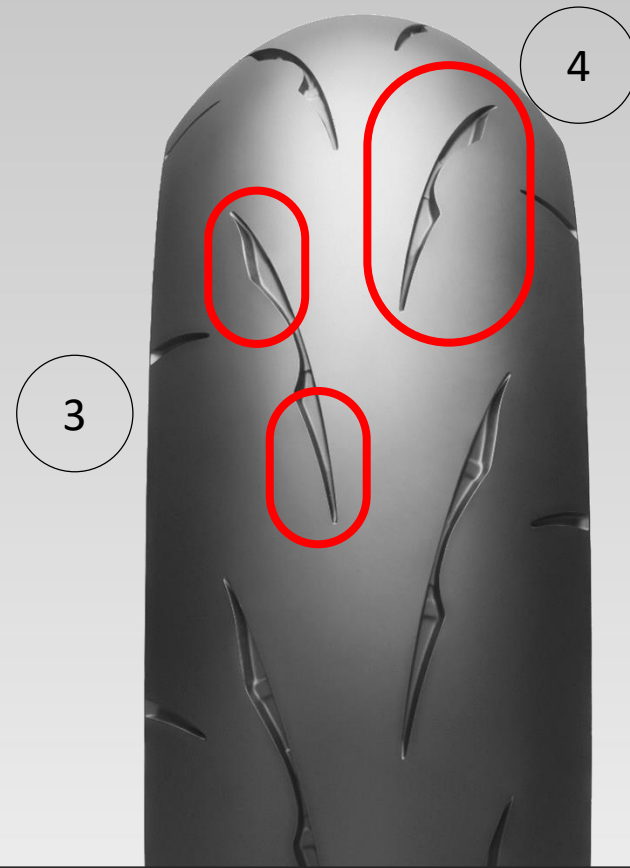
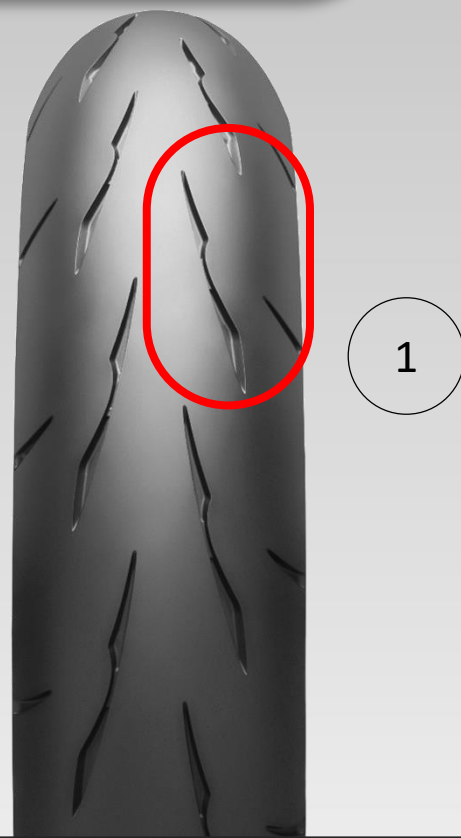
Product concept

- New flagship product for sport feel
- Transfer high performance technology from racing
- Ultra precise handling
- Excellent grip on road and track
- Be the number 1 choice of High Premium OEMs

Methodology

- Pattern design – derived from R11 racing grooved tyre
- New tread structures in 3LC
- New molecular approach with fine carbon
- Increased bite feel

BATTLAX RACING STREET **RS11**

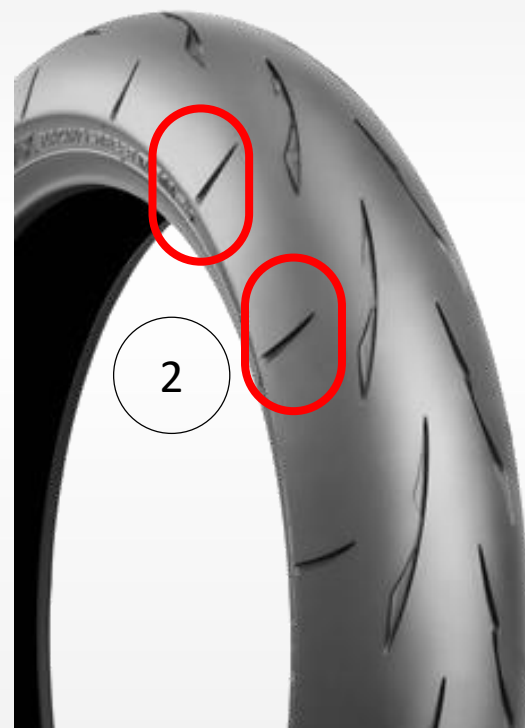


Front Pattern

- 1) Main groove positioning is optimised and arranged in the same direction as the most important input forces on the tyre
- 2) Reviewed shoulder groove length and angle

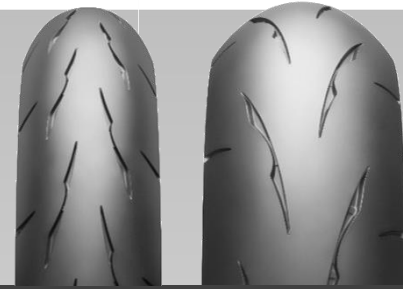
Rear Pattern

- 3) Extended main groove
- 4) Main groove positioning is optimised and arranged in the same direction as the most important input forces on the tyre
- 5) Optimised groove angle and alignment

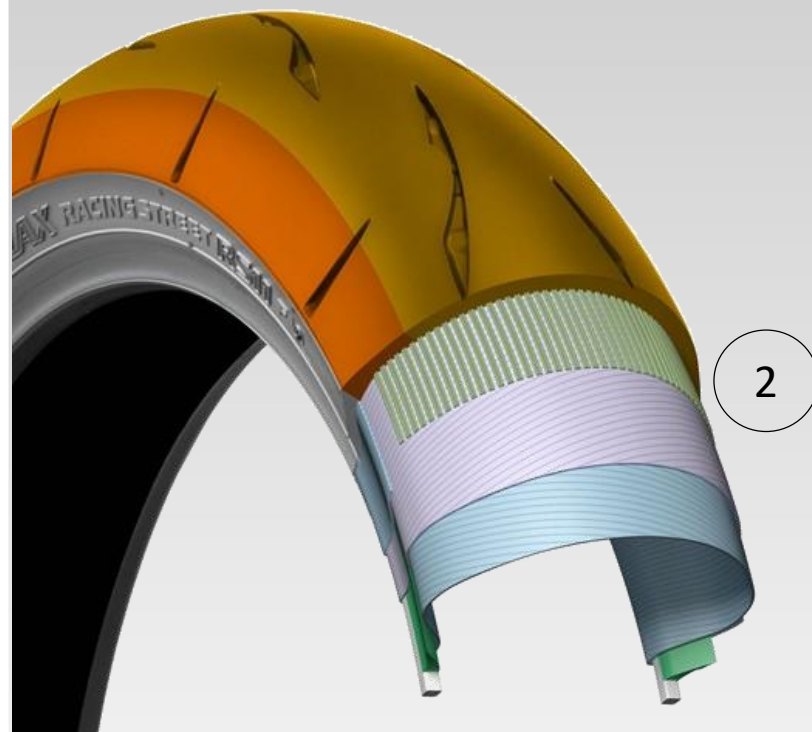


Benefits

- **Improved contact**
- **Extra focus for safety wet performance**
- **Increased cornering stability and feedback**



Construction Front

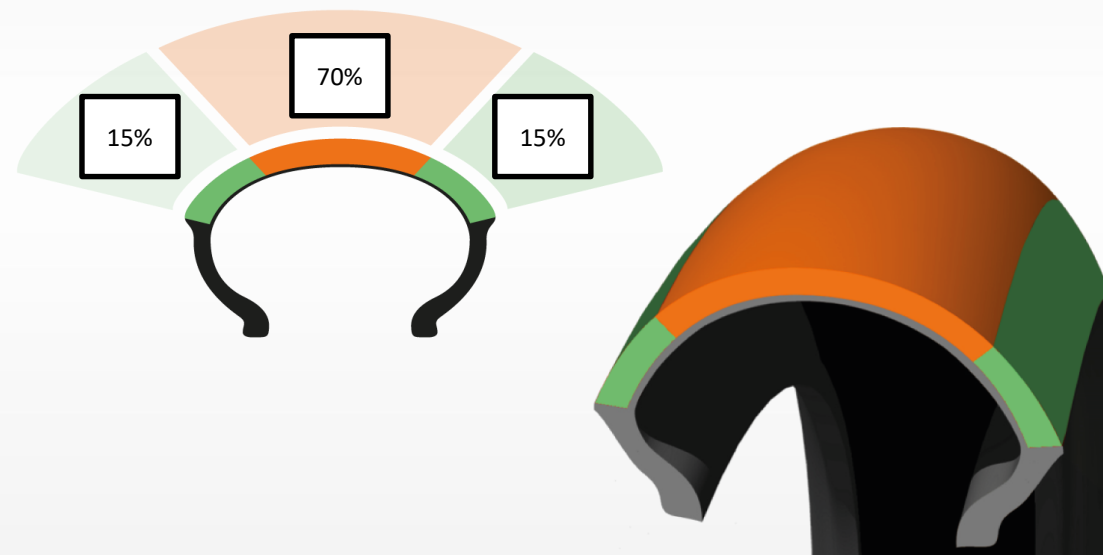


Technologies :



Compounding Front

3LC (3-Layer-Compound) - PARTITIONING



1

Technical elements

- 1) 3LC Compound structure :

Bringing a harder center compound together with a softer shoulder compound creating the right combination for stability and grip feel without compromising feedback.

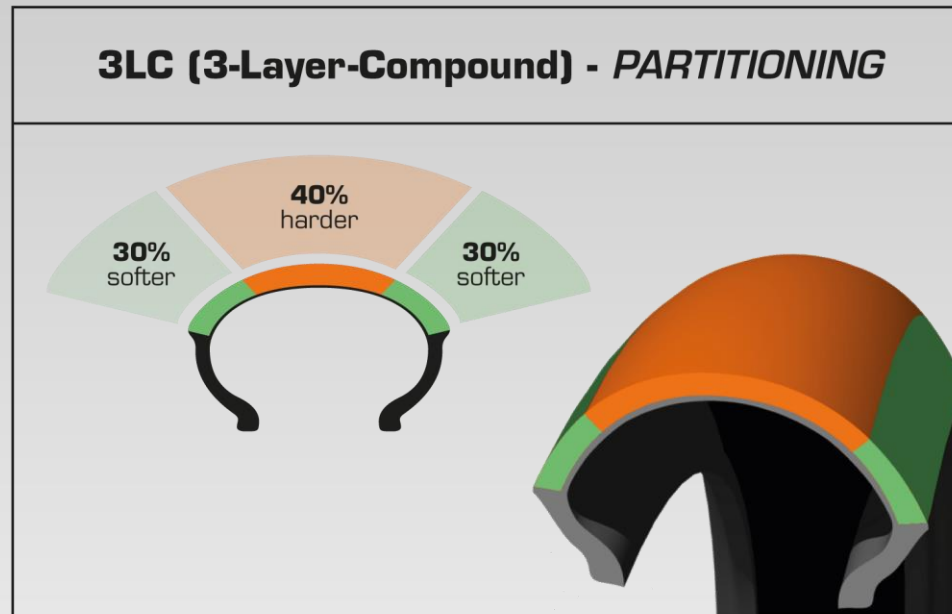
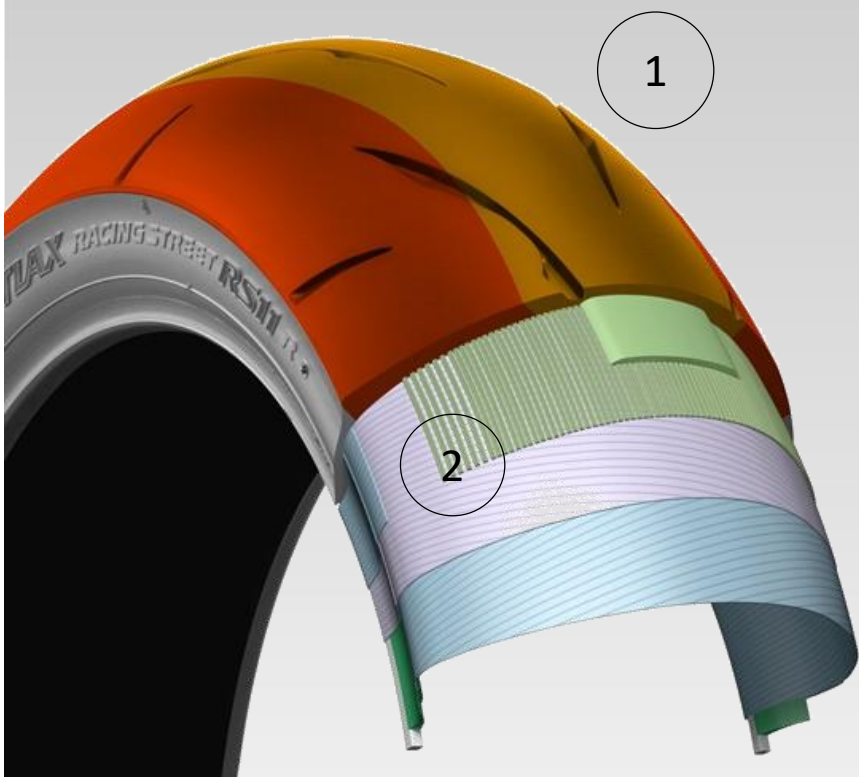
- 2) Applying Bridgestone's state of the art Belt construction technology :

MS-Belt with HTSPC technology for maximum handling performance and high speed stability.

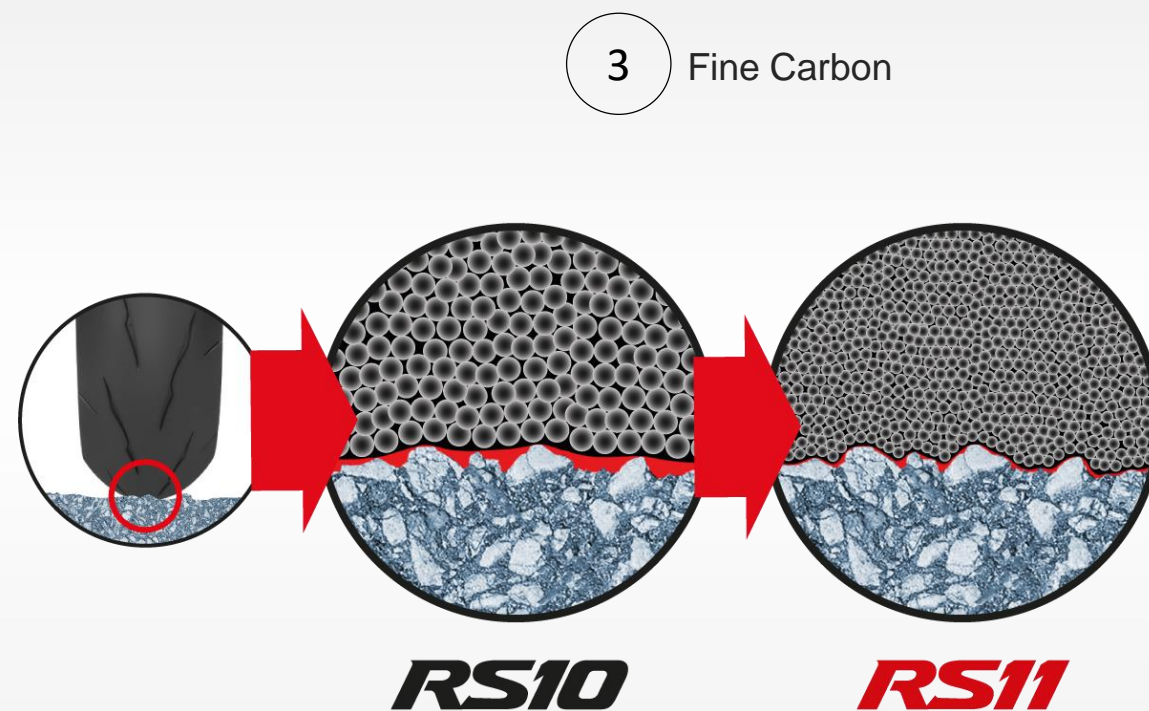
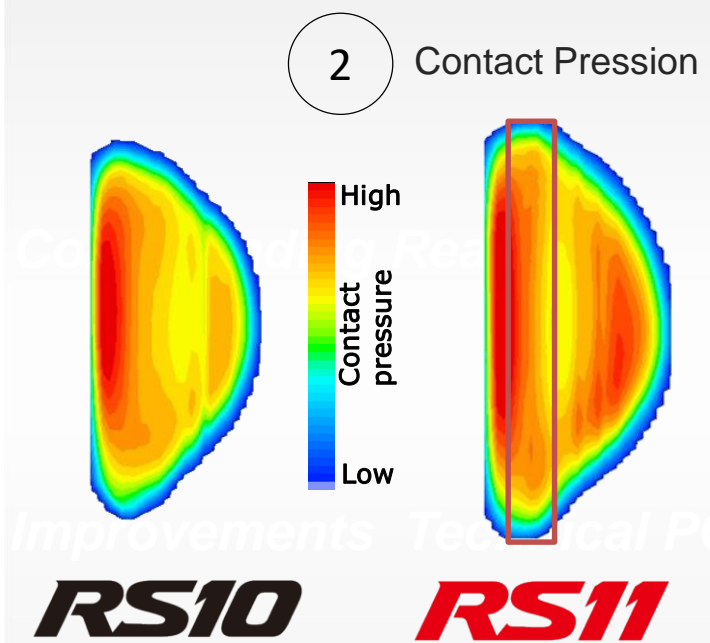
Benefits

- *High braking stability*
- *Feedback and precision*
- *Enhanced cornering grip*

Construction Rear



V-MS-Belt & New Compound



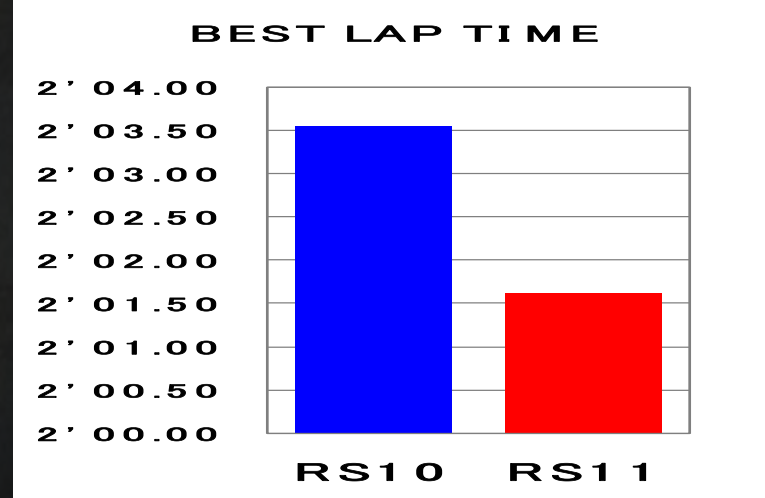
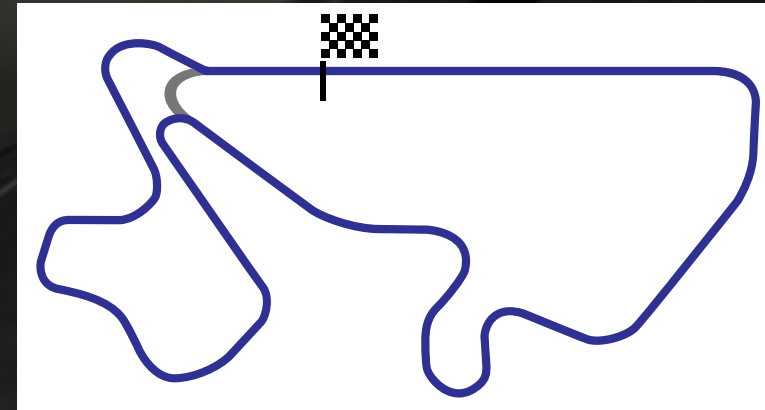
Tyre size: 190/55ZR17M/C RS10
190/55ZR17M/C RS11
Camber angle: 50 deg.

Technical elements

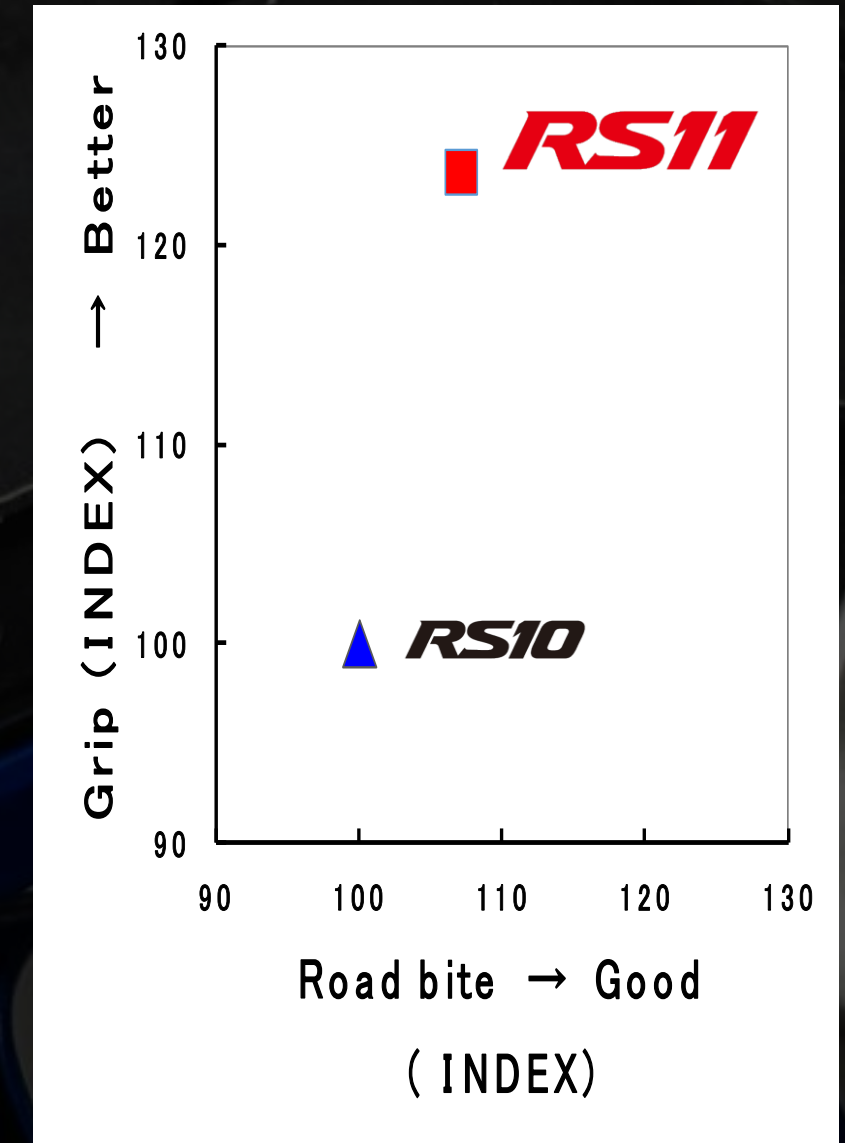
- 1) 3LC Compound structure :
Bringing a harder center compound together with a softer shoulder compound creating the right combination for stability and grip feel without compromising feedback.
- 2) Applying Bridgestone's innovative Belt construction technology : V-MS-Belt (Variable Monospiral Belt) :
RS11 is the first street oriented tyre which adopts this belt construction, currently used in Bridgestone's racing tyres
 - Optimising the tread stiffness distribution.
 - Increasing contact length at shoulder part
- 3) Adopting a new molecular approach of fine carbon particles :
 - Improving the bite to the road surface
 - Enhancing the grip characteristics of the compound

Benefits

- **Longer and better contact pressure for more grip and traction drive**
- **Grip improvement from compound side**

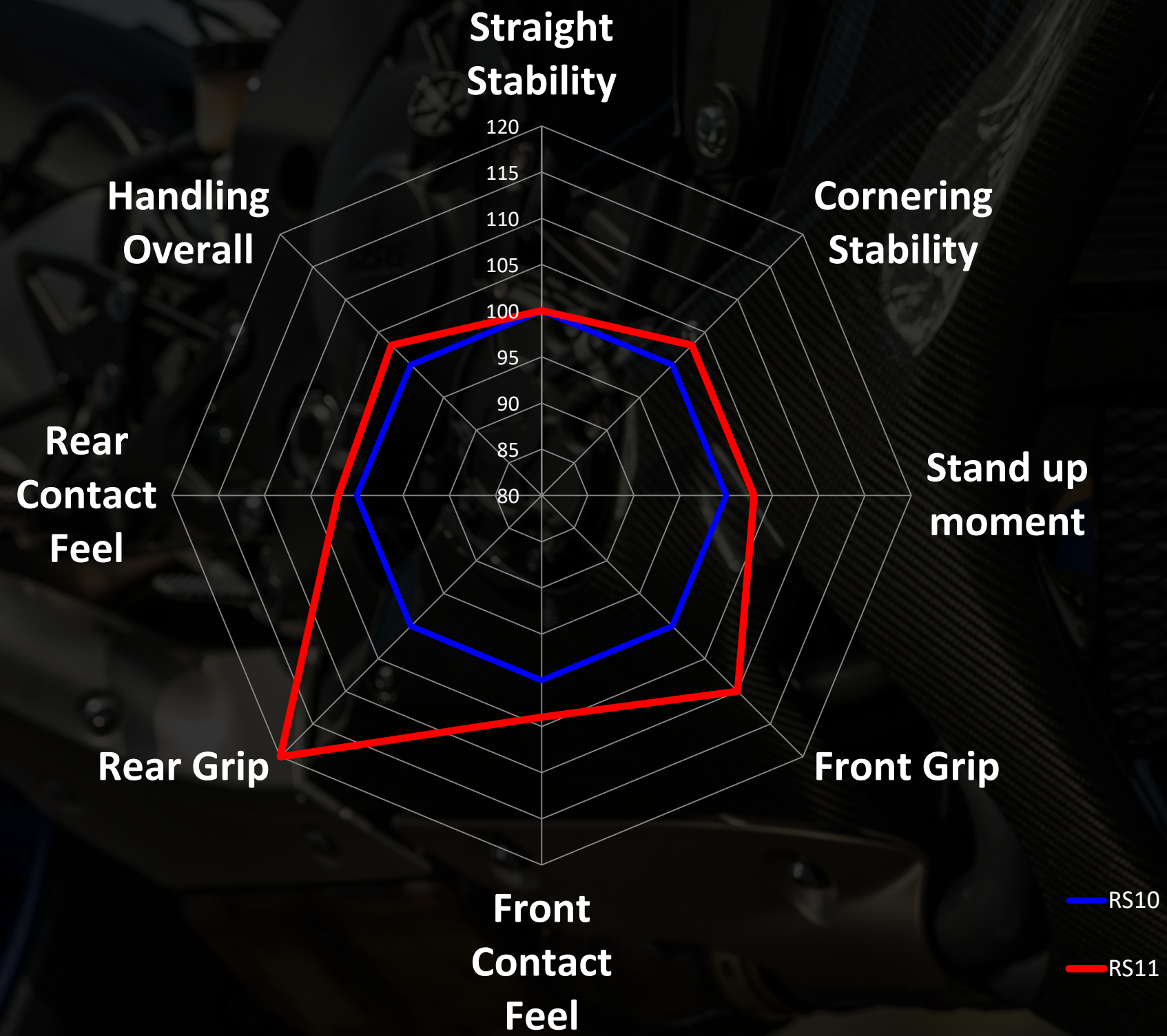


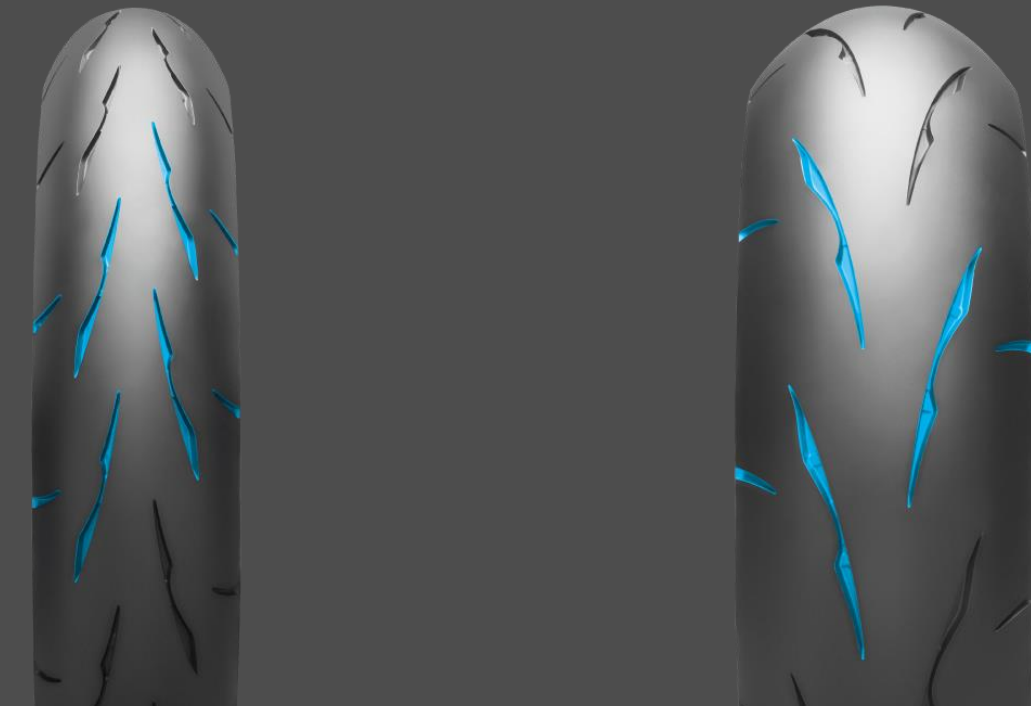
- Test Date: June/2019
- Venue: Autopolis (J)
- Vehicle: Honda CBR1000RR
- Tyre size:
- F) 120/70ZR17M/C (250 kPa Cold)
- R) 190/55ZR17M/C (290 kPa Cold)
- Rider: Bridgestone Contracted test rider



**2 sec faster
on a 2 min lap**

**20% More grip and
10% More bite feel**





N°	FR/RR	SIZE	Availability
1	Front	120/70 ZR 17 M/C (58W) TL	FEB 2019
2	Rear	190/55 ZR 17 M/C (75W) TL	
3		200/55 ZR 17 M/C (78W) TL	

Premium OEM choice

N°	Brand	Model
1	Yamaha	YZF-R1 MY2020
2	Yamaha	YZF-R1M MY2020
3	Suzuki	GSXR-1000 MY2019
4	Suzuki	GSXR-1000 R MY2019
5	Kawasaki	H2/Carbon MY2019
6	TBA	TBA

- *2 seconds faster on a 2 min lap*
- *20% higher grip and 10% more bite feel*
- *The choice of premium OEM models*
- *From racetrack to road without compromise*