

**BRIDGESTONE**  
Your Journey, Our Passion

**BATTLAX** ADVENTURECROSS **AX41**



## Travelling has no limits with the Battlax Adventurecross AX41 !

The Battlax Adventurecross AX41 is Bridgestone's new Trail Off-Road tyre. It will let you take on any type of path and allow you to enjoy the ride, even when you go into the unknown!

As can be seen in this new pattern's name, the Battlax Adventurecross AX41 is real mix of Bridgestone's know-how in the standard trail on-road category with Battlax technology and the of the art development capacities of block positioning in the Off-world with the Battlax series.

The AX41 adopts ingenious block design and positioning to ensure on- and off-road performance, durability and stability.

By introducing a real trail-Off-Road tyre in its line-up, Bridgestone completes its product offer.

Bridgestone's Battlax Adventurecross AX41 sets a new standard for Trail - Off road performance.





1000cc  
600cc  
400cc  
250cc

RACING  
BATTLEAX  
V02

BATTLEAX  
RACING  
R11

RACING  
BATTLEAX  
W01

BATTLEAX  
RACING STREET  
RS10

NEW  
BATTLEAX  
HYPERSPORT  
S22

BATTLEAX  
HYPERSPORT  
S21

BATTLEAX  
BT-016 PRO  
HYPERSPORT

BATTLEAX SPORT TOURING  
T31

BATTLEAX SPORT TOURING  
T30 EVO

BATTLEAX  
BT-023  
SPORT TOURING

BATTLECRUISE  
H50

EXEDRA MAX

BATTLEAX  
ADVENTURE  
A41

NEW  
ADVENTURECROSS  
AX41

NEW  
ADVENTURECROSS  
SCRAMBLER

AX41B

BATTLECROSS  
X10 X20 X30 X40

NEW  
BATTLECROSS  
E50

BATTLEAX SCOOTER  
SC2

BATTLEAX SCOOTER  
SC2 Rain

BATTLEAX  
SC

Race

Sports

Touring

Custom

Adventure

Off Road

Scooter

 Bridgestone's Battlax Adventurecross AX41 , the tyre that breaks boundaries.



### Product concept

To offer a Trail tyre with real off-road capabilities, in line with adventure riders' requirements. To make it possible for riders to discover new areas with their motorcycle without having to worry about the tyre capabilities.

### Technical aims

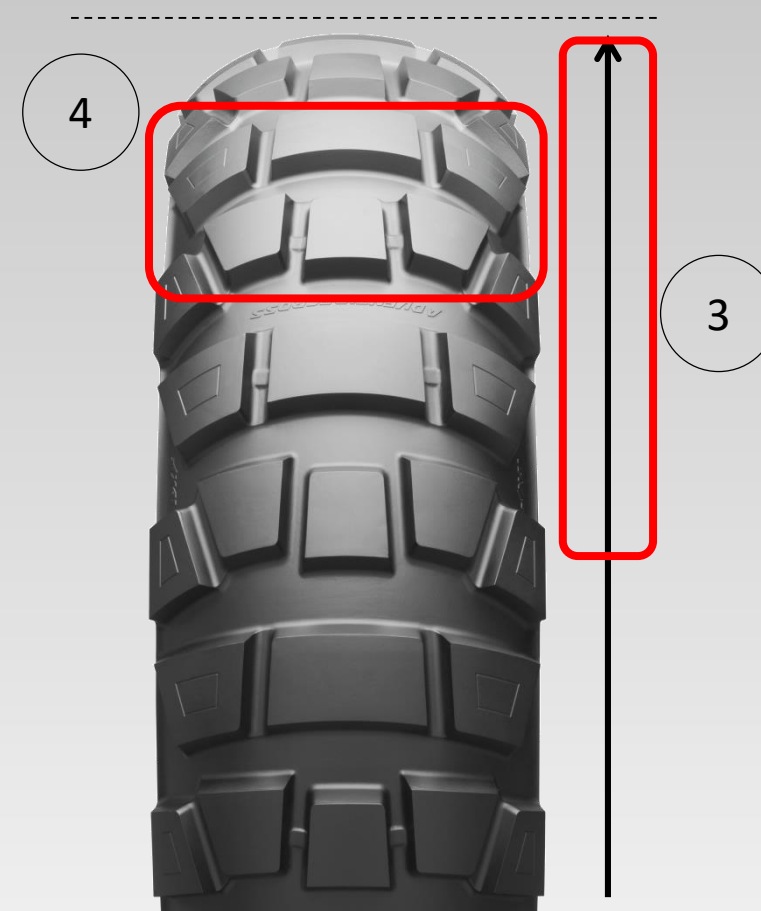
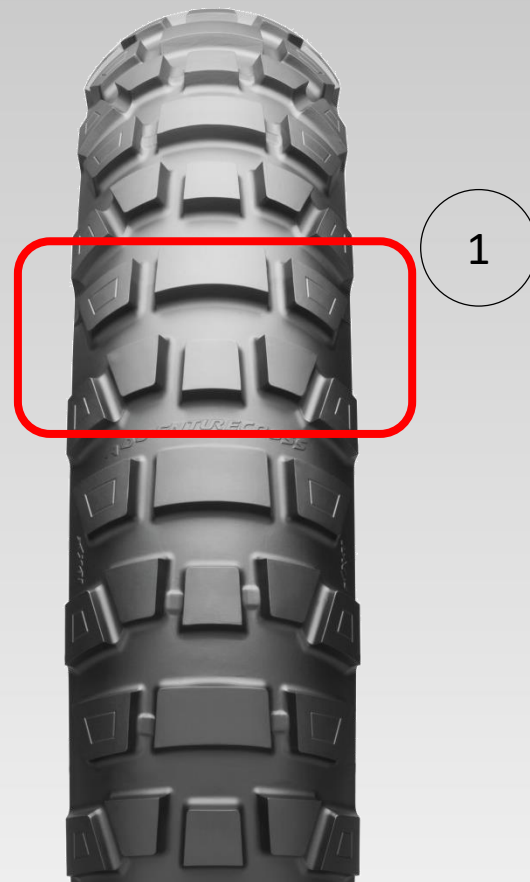
- Upgrade the Off-road traction
- Increase Off-road grip
- Focus on durability and irregular wear
- Don't sacrifice the on-road capabilities

### Methodology

- Pattern design and block positioning for outstanding performance
- Block design ensuring block rigidity
- Optimize overall dimensions of the tyre
- Adopting high strength compound







**Front Pattern & block positioning**

- 1) Block wall angle optimization :
  - Upgrading the block rigidity with feedback for the rider.
- 2) A-IW Technology : Anti – Irregular Wear Technology :
  - The A-IW technology consists in reducing the heel and toe wear at the trailing edge of the block thanks to block deformation under braking forces constraints.
  - This new block profile is countering the deformation and ensuring the durability of the tyre.

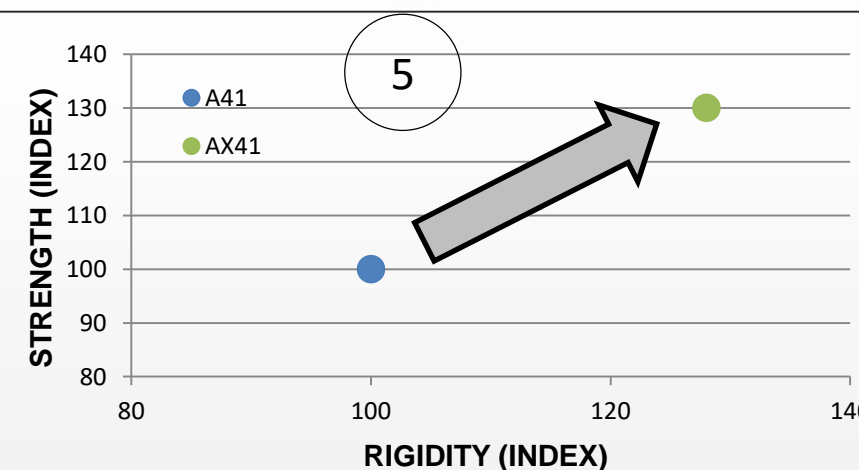
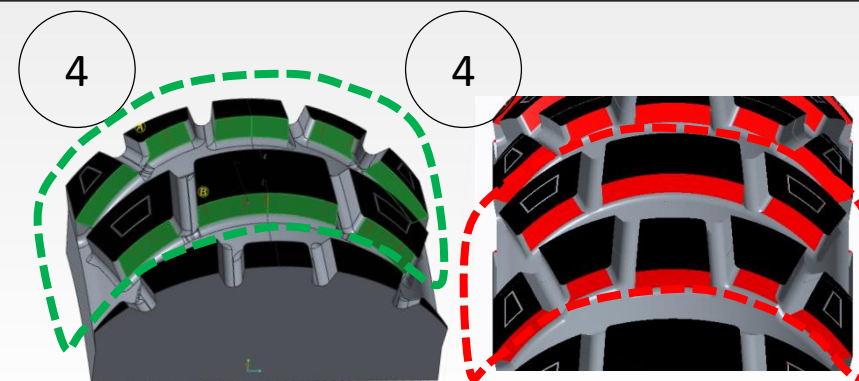
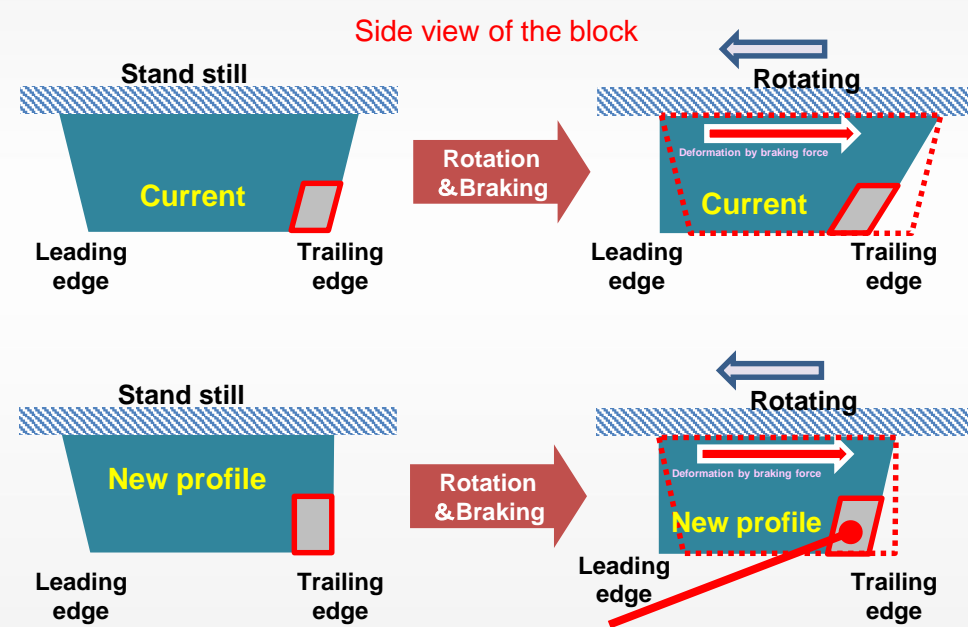
**Rear Pattern & block positioning**

- 3) Redesign the tyre dimensions to increase the total amount of blocks on the tyre.
- 4) Apply a high cross section area and a small pitch length :
  - Increase the cross section area with 30% compared the A41.
  - Shorter pitch length in order to increase with the higher diameter of the tyre the amount of blocks over the circumference.
- 5) Increase both compound rigidity and strength compared to the Trail – on road Battlax Adventure A41 to ensure the balance between durability and off-road performance.

**Benefits**

- *Excellent “Off-road” capabilities*
- *Increased traction Grip in muddy conditions*
- *Well-balanced performances including durability*
- *Limited Irregular wear in “On-road” usage.*

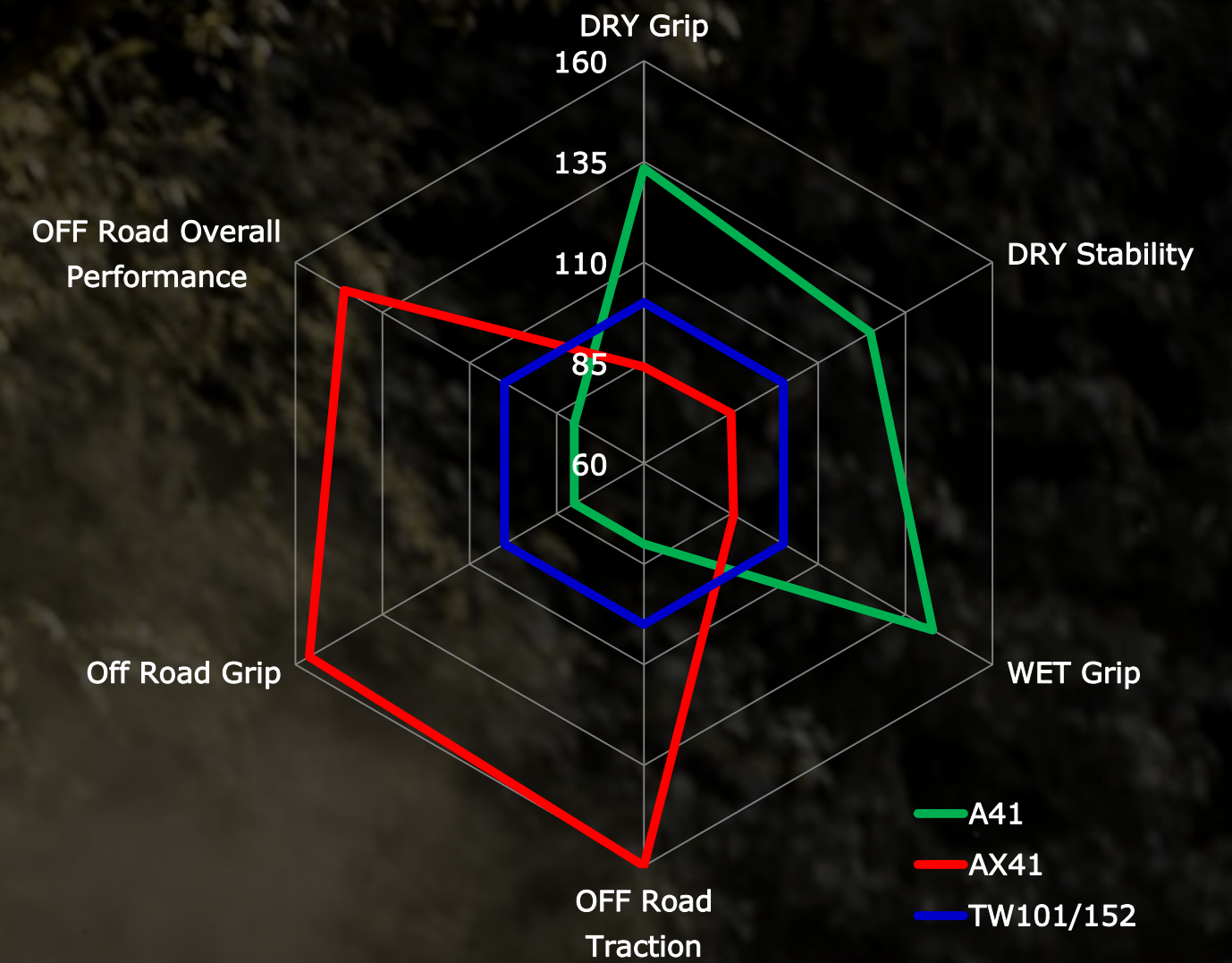
**2 A-IW Technology**







PERFORMANCE OVERVIEW



Performance

- Differentiating Trail on and Trail Off-road performance
- Clear Off-road performance increase vs. Bridgestone's Trail on-off tyre : TW1XX (TrailWing series)
- On top of the Off-road capabilities, showing good on road performance to jump from the road to any other terrain safely



**BRIDGESTONE**  
Your Journey, Our Passion



**LINE-UP**

N°	FR/RR	SIZE	UM*	M+S	Availability
1	Front	100/90 - 19 M/C 57Q TL	✓	✓	JAN 2019
2		110/80 B 19 M/C 59Q TL	✓	✓	
3		120/70 B 19 M/C 60Q TL	-	✓	
4		90/90 - 21 M/C 54Q TL	✓	✓	
5	Rear	130/80 B 17 M/C 65Q TL	✓	✓	
6		140/80 B 17 M/C 67Q TL	✓	✓	
7		150/70 B 17 M/C 69Q TL	✓	✓	
8		170/60 B 17 M/C 72Q TL	✓	✓	
9		150/70 B 18 M/C 70Q TL	✓	✓	
10	Front	100/90 - 18 M/C 56 P TL	✓	✓	JAN 2020
11		90/100 - 19 M/C 55P TL	✓	✓	
12		80/100 - 21 M/C 51P TT	-	✓	
13		2.75 - 21 M/C 45P TT	-	✓	
14	3.00 - 21 M/C 51P TT	-	✓		
15	Rear	120/90 - 16 M/C 63P TL	✓	✓	
16		130/80 - 17 M/C 65P TL	✓	✓	
17		120/90 - 17 M/C 64P TL	✓	✓	
18		120/80 - 18 M/C 62P TL	✓	✓	
19		120/90 - 18 M/C 65P TL	✓	✓	
20		130/80 - 18 M/C 66P TL	✓	✓	
21		4.60 - 17 M/C 62P TT	-	✓	
22		4.00 - 18 M/C 64P TL	✓	✓	
23		4.10 - 18 M/C 59P TL	✓	✓	
24		4.60 - 18 M/C 63P TT	-	✓	

\* UM application : If mounted on TubeType rim use a tube

**BATTLAX** ADVENTURECROSS **AX41**



- *30% higher compound rigidity and strength*
- *High Off-road Traction and Grip performance*
- *Focus on Irregular Wear for excellent durability*
- *Full Line-up with UM application*